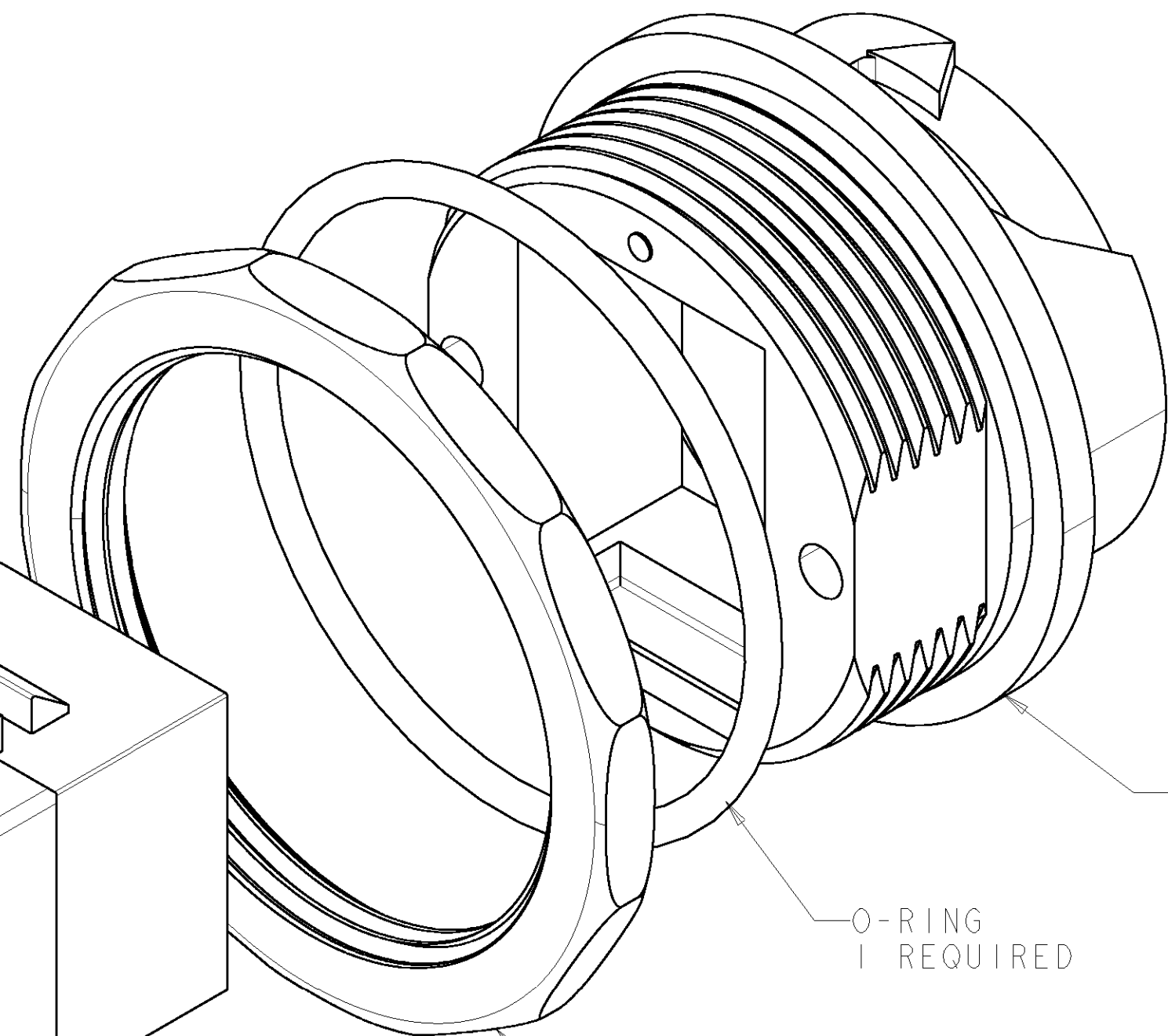


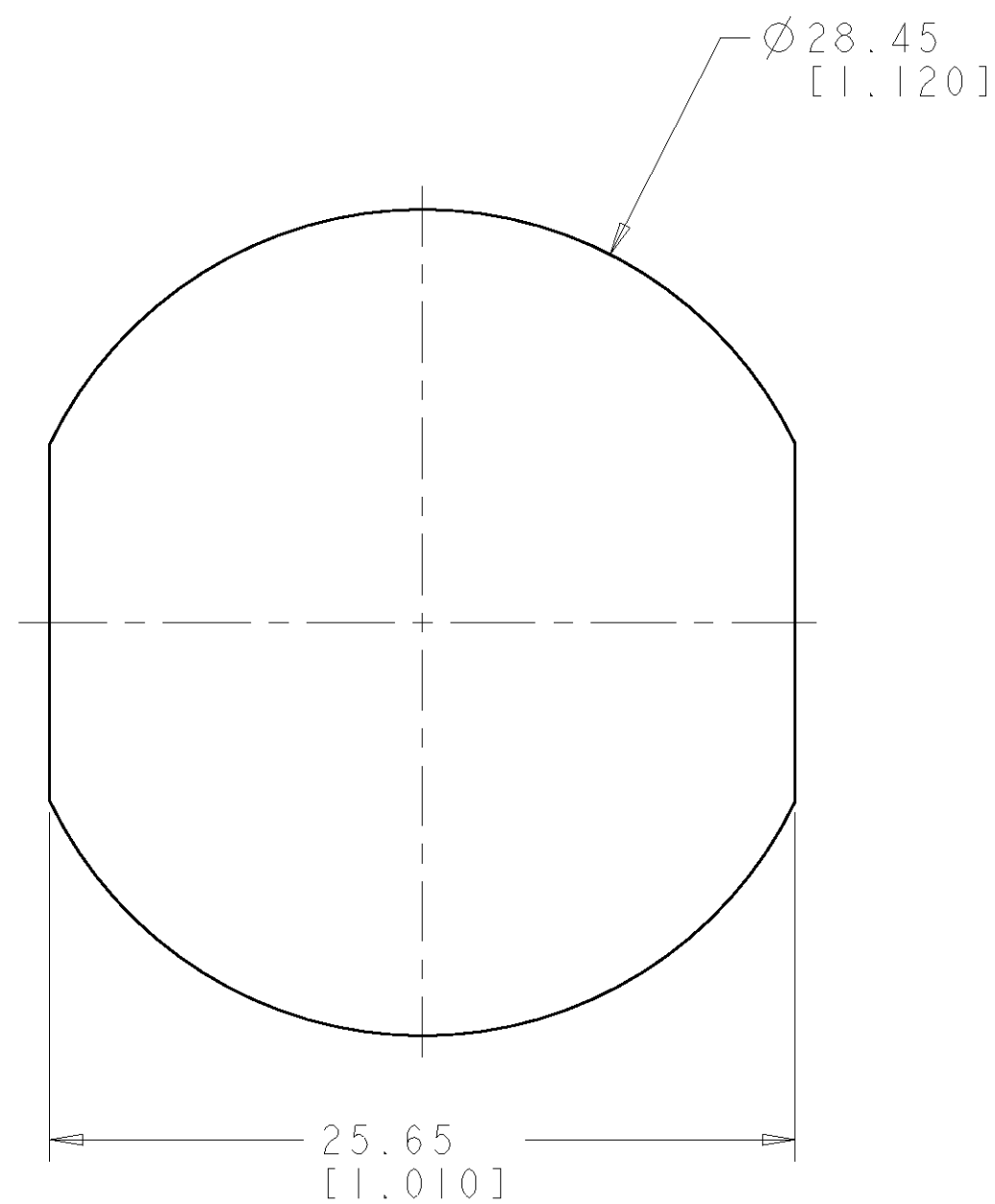
SHIELD ASSEMBLY
I REQUIRED

RECEPTACLE HOUSING
1 REQUIRED

-O-RING
I REQUIRED

-PANEL NUT
1 REQUIRED

SL 110
CAT 6 JACK
PART NUMBER 1375188-1
1 REQUIRED



RECOMMENDED PANEL CUTOUT
SCALE 4:1 

△ MATERIAL: JACK HOUSING - POLYPHENYLENE OXIDE,
94V-0 RATED.
ARRAY TRAY - PBT POLYESTER.
110 BLOCK - POLYCARBONATE.
JACK CONTACTS - BERYLLIUM COPPER, PLATED WITH
1.27μm [0.00050] MINIMUM THICK GOLD IN LOCALIZED
AREA AND 3.81μm [0.00150] MINIMUM THICK TIN-LEAD IN
SOLDER AREA OVER 1.27μm [0.00050] MINIMUM THICK
NICKEL UNDERPLATE.
SHIELD - COPPER ZINC ALLOY 260 PREPLATED WITH
BRIGHT NICKEL.
IDC TERMINALS - PHOSPHOROUS BRONZE, PLATED WITH
3.81μm [0.0015] MINIMUM THICK BRIGHT TIN-LEAD
OVER 1.27μm [0.0005] MINIMUM THICK
NICKEL UNDERPLATE.
RECEPTACLE HOUSING - PBT, 94V-0 RATED.
O-RING SEALS - BUNA.
PANEL NUT - NICKEL PLATED BRASS.

2. SL 110 JACK WILL TERMINATE 22-24 AWG SOLID CONDUCTORS AND 24 AWG STRANDED CONDUCTORS, 1.14 [.045] MAXIMUM INSULATION DIAMETER.

 SUGGESTED PANEL CUTOUT OPENING.

4 PACKAGED ONE MODULAR JACK, ONE SHIELD,
ONE O-RING, ONE ETHERSEAL HOUSING, AND ONE PANEL NUT,
PER POLYBAG. KIT SHIPPED NOT ASSEMBLED.

5 REFER TO INSTRUCTION SHEET 408-8602 FOR JACK
TERMINATION ASSEMBLY INSTRUCTIONS AND 408-8875 FOR
ETHERSEAL RECEPTACLE KIT ASSEMBLY INSTRUCTIONS.

THIS DRAWING IS A CONFIDENTIAL DOCUMENT FOR THE CUSTOMER'S PROPRIETARY INFORMATION. IT IS SUBJECT TO THE SAME CONFIDENTIALITY AGREEMENT AS THE INFORMATION TO WHICH IT RELATES. IT SHOULD BE CONTROLLED BY THE CUSTOMER'S QUALITY ASSURANCE DEPARTMENT.		DWN G. GARRETT 21JAN04 CHK C. DOOLEY 21JAN04 APVD C. DOOLEY 21JAN04		BLACK COLOR		1479566-2 PART NUMBER	
DIMENSIONS: MM (INCHES)		TOLERANCES, UNLESS OTHERWISE SPECIFIED: 0 P/LC ± 1 P/LC ± 2 P/LC ± 3 P/LC ± 4 P/LC ± ANGLES ±		tyco Electronics Tyco Electronics Harrisburg, PA 17105-3608		KIT, ETHERSEAL, SHIELDED, CAT 6 SL 110 JACK, FRONT MOUNT, BLACK	
MATERIAL 		FINISH -		PRODUCT SPEC - APPLICATION SPEC -		NAME KIT, ETHERSEAL, SHIELDED, CAT 6 SL 110 JACK, FRONT MOUNT, BLACK	
WEIGHT -		CUSTOMER DRAWING		SIZE A		CASE CODE 00779	
DRAWING NO. 1479566		RESTRICTED TO -		SCALE 4:1		SHEET 1 OF 1	
REV A		REV A		REV A		REV A	